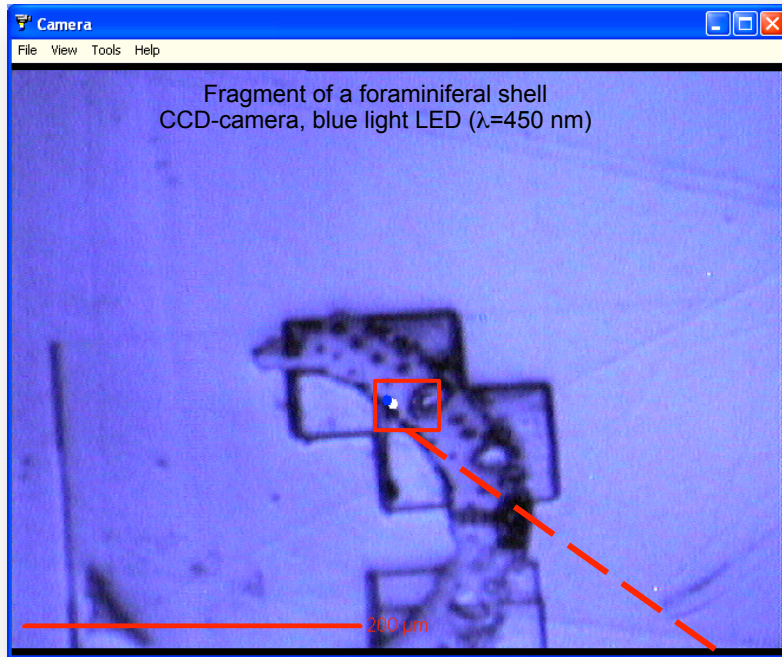


**Point logger:
Precise aiming in difficult samples**

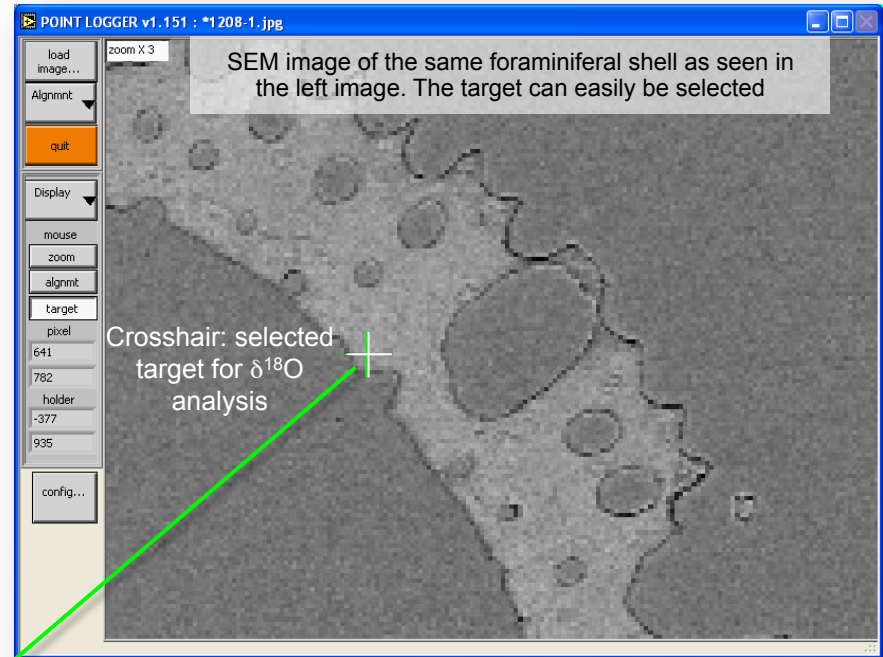
CAMECA

IMS 1280

During analysis, the sample can be seen by an optical microscope/ CCD-camera. This representative image demonstrates the aiming-process (primary beam hits at blue marker). Typically this system is used for sample navigation and aiming.



For some types of samples, the resolution of the optical microscope (left image) is insufficient for precise aiming. We can upload SEM images (field of view ~ 500 μ m) and align them to the sample stage. Subsequently, targets can be selected using the more detailed/higher resolution SEM image.



Point Logger

Using SEM images for precise aiming

